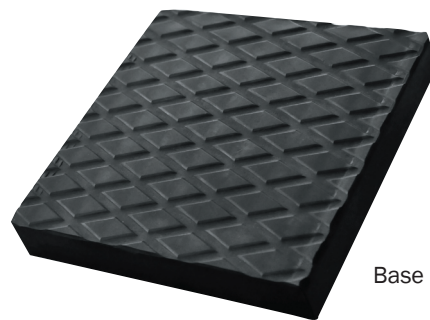
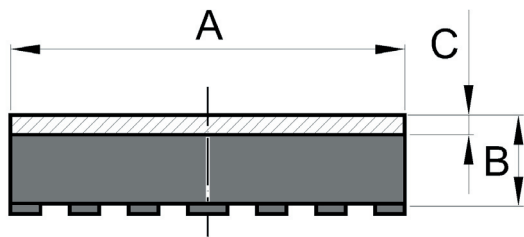


Base quadra



Base a rombi

TIPO	dimensioni [mm]			carico statico [daN]	freccia [mm]
	A	B	C		
Base 6 Q	80 x 80	30	10	750	2,3
Base 9 Q	100 x 100	30	15	1000	2
Base 10 Q	200 x 200	30 rombi	15	4000	2
Base 10 R	200 x 250	30	12	5000	2
Base 11 Q	400 x 400	30 rombi	15	16000	2
Base 12 Q	500 x 500	30 rombi	15	25000	2
Base 13 Q	125 x 125	20	6	1500	2,2
Base 14 R	300 x 400	30	15	12000	2
Base 15 Q	350 x 350	30+60	10+15	12250	2 + 6
Base 17 Q	300 x 300	30 rombi	15	9000	2
Base R	80 x 200	62 in sola gomma con rilievi a rombi sulle due facce			
Base R	150 x 300	20 rombi	10	4500	2
Base Q	160 x 160	30 - 40 - 50 - 60	15	2500	3+5
Base Q	170 x 170	30 - 40 - 50	15	2800	2+3,5
Base R	140 x 180	30	-	2500	2
Base Q	250 x 250	30 + 70 rombi	-	6000	2+4